

**AUTUMN SMOKE**  
S542



**BASSWOOD**  
S1183



**WARM SHADOW**  
S540



**GEMSTONE**  
S549



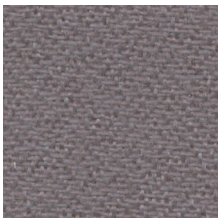
**BUTTERMERE**  
S1190



**ZINC**  
S554



**HUNTER**  
S1187



**MIDNIGHT**  
S1193








**AUTUMN SMOKE**  
S542



**EBONY HUE**  
S1185

## ■ Specification Information

Description	Sensa
Grade	1
Content	100% Polyester
Repeat	None
Width	66"
Weight	16 oz./Linear Yard +/-0.5
Fabric Treatment	None
Performance	
 Abrasion	Passes ASTM-D1682: 60,000 double rubs. Abrasion resistance is the surface wear of a fabric caused by rubbing and contact with another fabric.
 Physical Properties	Passes Breaking Strength ASTM D5034 (2001) (Grab test) 35 lbs. minimum in warp and weft. Breaking strength is the measurement of stress exerted to pull a fabric apart under tension.
 Colorfastness to Wet and Dry Crocking	Passes AATCC 8-2001 Dry Crocking, Class 5.0. Wet Crocking, Class 5.0. Crocking is the transfer of dye from the surface of a dyed or printed fabric onto another surface by rubbing.
 Colorfastness to Light	Passes AATCC-16A 40 hrs. minimum. Colorfastness to light refers to a material's degree of resistance to the fading effect of light.
 Flame Resistance	Passes ASTM E 84 (Tunnel Test); Passes. Flame resistance is the measurement of a fabric's performance when it is exposed to specific sources of ignition.

Colors may vary slightly between dye lots.

KI is a registered trademark of  
Krueger International, Inc.

© 2008 KI Litho in USA KI-32393/HC/EWB/408

