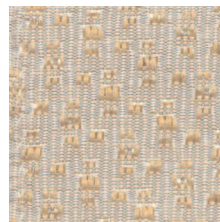


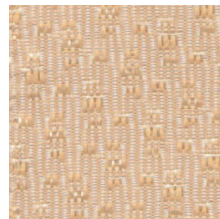
ASTEROID
Q2AD



PULSAR
Q2PR



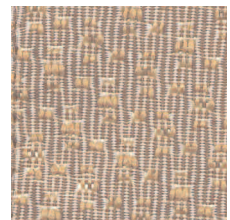
ASTEROID
Q2AD



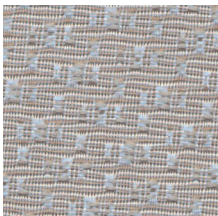
SOLAR
Q2SR



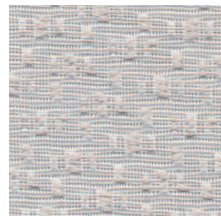
GALAXY
Q2GY



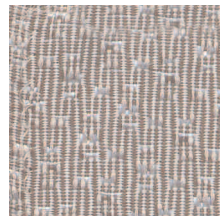
SUNSPOT
Q2ST



BLUE MOON
Q2BN



CORONA
Q2CA



LUNAR
Q2LR

■ Specification Information

Description	Quotient
Grade	2
Content	100% Polyester (56% Recycled)
Repeat	None
Width	66"
Weight	9.6 +/- 1 oz./Linear Yard
Fabric Treatment	None
Performance	
 Abrasion	Decorative with full serviceability (# 10 Cotton Duck) ASTM D-4157 Mod.: 15,000 Double Rubs. Abrasion resistance is the surface wear of a fabric caused by rubbing and contact with another fabric.
 Physical Properties	Passes Breaking Strength ASTM D5034: 216 lbs. Warp, 126 lbs. Fill. Breaking strength is the measurement of stress exerted to pull a fabric apart under tension.
 Colorfastness to Wet and Dry Crocking	Passes AATCC 8 Dry Crocking, Class 4. Wet Crocking, Class 4. Crocking is the transfer of dye from the surface of a dyed or printed fabric onto another surface by rubbing.
 Colorfastness to Light	Passes AATCC-16 – 40 hrs.: L5. Colorfastness to light refers to a material's degree of resistance to the fading effect of light.
 Flame Resistance	Passes ASTM E84 – Class A or Class I. Flame resistance is the measurement of a fabric's performance when it is exposed to specific sources of ignition.

Colors may vary slightly between dye lots.

KI is a registered trademark of
Krueger International, Inc.

© 2008 KI Litho in USA KI-32395/HC/EWB/308

