

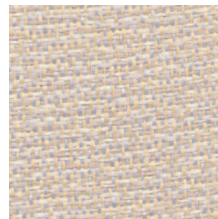
■ **Basis Grade 1**
Vertical Fabric



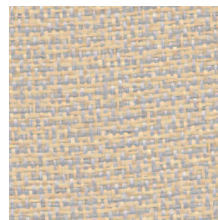
BELMONT SILVER
B1BR



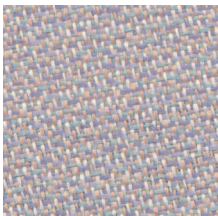
BELMONT SILVER
B1BR



ALLAGASH MIST
B1AT



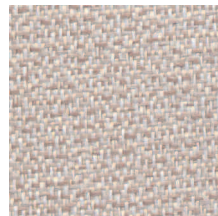
MEADOW
B1MW



COLBY BLUE
B1CE







PLATINUM
B1PM



SHERMAN PEWTER
B1SR

■ Specification Information

Description	Basis
Grade	1
Content	100% Recycled Polyester
Repeat	None
Width	54"
Weight	8.3 oz. +/-0.5 oz./Linear Yard
Fabric Treatment	None
Performance	
 Physical Properties	Passes Breaking Strength ASTM D5034-95. 150 lbs. warp, 100 lbs. fill. Breaking strength is the measurement of stress exerted to pull a fabric apart under tension.
 Colorfastness to Wet and Dry Crocking	Passes AATCC 8-2001 Dry Crocking, Class 4 minimum. Wet Crocking, Class 3 minimum. Crocking is the transfer of dye from the surface of a dyed or printed fabric onto another surface by rubbing.
 Colorfastness to Light	Passes AATCC 16 Option 3, 40 hours. Colorfastness to light refers to a material's degree of resistance to the fading effect of light.
 Flame Resistance	Passes ASTM E 84, Class I or A. Flame resistance is the measurement of a fabric's performance when it is exposed to specific sources of ignition.

Colors may vary slightly between dye lots.

KI is a registered trademark of
Krueger International, Inc.

© 2007 KI Litho in USA KI-32385/HC/EWB/108

