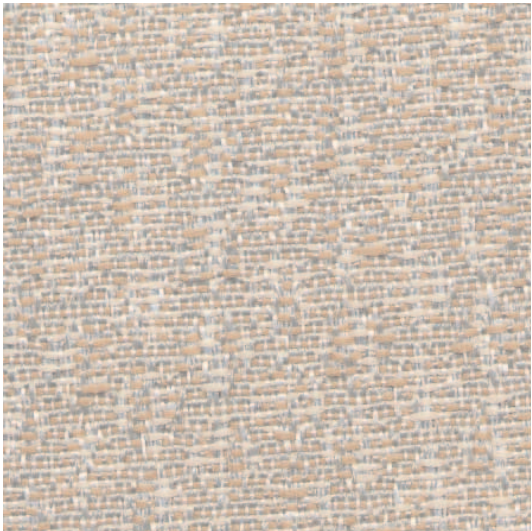


■ Estimation Grade 1

Vertical Fabric



CALCITE
E1CE



TRACE
E1TE



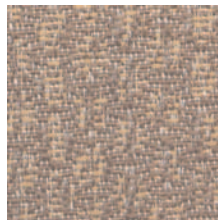
CALCITE
E1CE



SHELL
E1SL



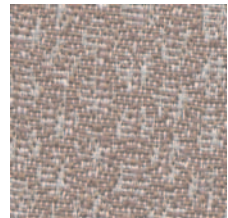
CELESTITE
E1CT



FOSSIL
E1FL








GLACIER
E1GR



CAVE
E1CV

■ Specification Information

Description	Estimation
Grade	1
Content	100% Polyester (57% Recycled)
Repeat	12.24" Vertical, 14.46" Horizontal
Width	66"
Weight	9.56 +/- 1 oz./Linear Yard
Fabric Treatment	None
Performance	
 Abrasion	Decorative with full serviceability (# 10 cotton duck) ASTM D-4157. Abrasion resistance is the surface wear of a fabric caused by rubbing and contact with another fabric.
 Physical Properties	Passes Breaking Strength ASTM D-5034: 205 lbs. Warp, 145 lbs. Fill. Breaking strength is the measurement of stress exerted to pull a fabric apart under tension.
 Colorfastness to Wet and Dry Crocking	Passes AATCC 8 Dry Crocking, Class 4. Wet Crocking, Class 4. Crocking is the transfer of dye from the surface of a dyed or printed fabric onto another surface by rubbing.
 Colorfastness to Light	Passes AATCC 16, 40 hrs.: L5. Colorfastness to light refers to a material's degree of resistance to the fading effect of light.
 Flame Resistance	Passes CAL-117 Section E. Passes ASTM E84 – Class A or Class 1. Flame resistance is the measurement of a fabric's performance when it is exposed to specific sources of ignition.

Colors may vary slightly between dye lots.

KI is a registered trademark of
Krueger International, Inc.

© 2008 KI Litho in USA KI-32389/HC/EWB/308

