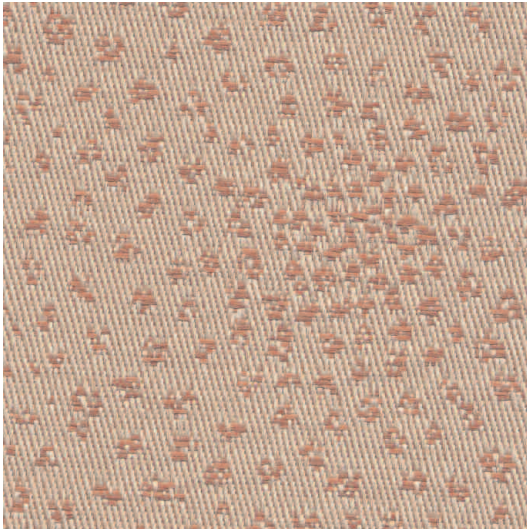
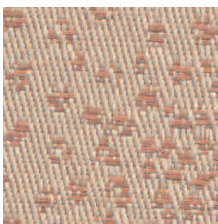


■ **Ratio Grade 2**
Vertical Fabric



NUTMEG
R2NG



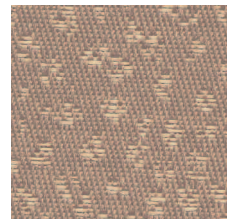
NUTMEG
R2NG



PUTTY
R2PY



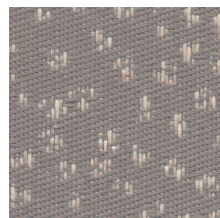
DANDELION
R2DN



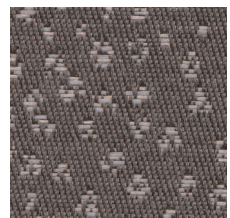
TOFFEE
R2TE



MOSS
R2MS







MARBLE
R2ME



PEPPERCORN
R2PN

■ Specification Information

Description	Ratio
Grade	2
Content	100% Recycled Polyester
Repeat	27" Vertical, 14.25" Horizontal
Width	66"
Weight	10.7 oz./Linear Yard
Fabric Treatment	Acrylic
Performance	
 Physical Properties	Passes Breaking Strength (ASTM D1682-64): 111.4 lbs. Warp, 97.7 lbs. Fill. Breaking strength is the measurement of stress exerted to pull a fabric apart under tension. Passes Tensile (ASTM D5034): 180.7 lbs. Warp, 174.8 lbs. Fill. Passes Seam Slippage (ASTM D3597-D434-75): 54.4 lbs. Warp, 65.1 lbs. Fill. Seam slippage is the movement of yarns in a fabric that occurs when it is pulled apart at a seam.
 Colorfastness to Wet and Dry Crocking	Passes (AATCC 8-1981): Dry Crocking, Class 5. Wet Crocking, Class 5. Crocking is the transfer of dye from the surface of a dyed or printed fabric onto another surface by rubbing.
 Colorfastness to Light	Passes (AATCC 16-46A-1974 or AATCC 16-E1976): Class 4/40 hrs. min. Colorfastness to light refers to a material's degree of resistance to the fading effect of light.
 Flame Resistance	Passes California Technical Bulletin #117 Section E – Class 1. Flame resistance is the measurement of a fabric's performance when it is exposed to specific sources of ignition.

Colors may vary slightly between dye lots.

KI is a registered trademark of
Krueger International, Inc.

© 2008 KI Litho in USA KI-32444/HC/EWB/408

