



Pallas®
Archaeology II



Archaeology II is a wonderful mix of colors and textures offering a group of neutrals that include the matte metal colors of pewter, bronze, platinum, smoky quartz and mahogany; plus earthy reds and russets, sunkissed greens, and midnight wines; and elegant combinations, such as black, pewter and sand. Subtle variations of color enhance the rhythm of the designs creating fabrics that are soft and neutral yet lyrical and lively. With designs that are rooted in ancient inspirations but interpreted for today, Archaeology II offers hospitality and office designers the tactile dimensional look that is associated more with residential designs.



Flame Resistance

Passes California Bulletin 117 Section E. Flame resistance refers to a fabric's ability to resist burning.



Colorfastness to Wet & Dry Crocking

Passes AATCC 8 Dry Crocking, Class 4 minimum. Wet Crocking, Class 3 minimum. Colorfastness is a fabric's ability to retain color in various conditions. Crocking refers to the rubbing off of color from a fabric when subjected to abrasion.



Colorfastness to Light

Passes AATCC 16A or AATCC 16E Class 4 minimum at 40 hours. Colorfastness to light refers to a fabric's ability to resist fading when exposed to light.



Physical Properties

Passes Brush Pilling ASTM D3511, 3 minimum. Pilling is the formation of fuzzy balls on the surface of the fabric. Pilling occurs when loose fibers in the fabric are worked to the surface after the fabric is subjected to abrasion. Passes breaking strength ASTM D3597-D1682-64, 50 lbs. minimum in warp & weft. Breaking strength measures a fabric's ability to resist tearing or breaking when subjected to tension. Passes seam slippage ASTM D3597-D434 25 lbs. minimum in warp & weft. Seam slippage refers to the conditions when fabrics pull apart at a sewn seam.



Abrasion

Passes ASTM 3597 modified (10# cotton duck) 30,000 double rubs Wyzenbeek method. Passes ASTM D4966 (21 oz. weight) 40,000 rubs Martindale method. Abrasion resistance is the ability of a fabric to withstand surface wear from rubbing.

MALTA 27.093

Grade: PI

Content: 63% Rayon, 37% Polyester

Width: 54"

Symbols:

NEWGRANGE 27.094

Grade: PI

Content: 57% Rayon, 43% Polyester

Width: 54"

Symbols:

ETRURIA 27.092

Grade: PII

Content: 54% Rayon, 46% Polyester

Width: 54"

Symbols:

MONTE ALBÁN 27.095

Grade: PII

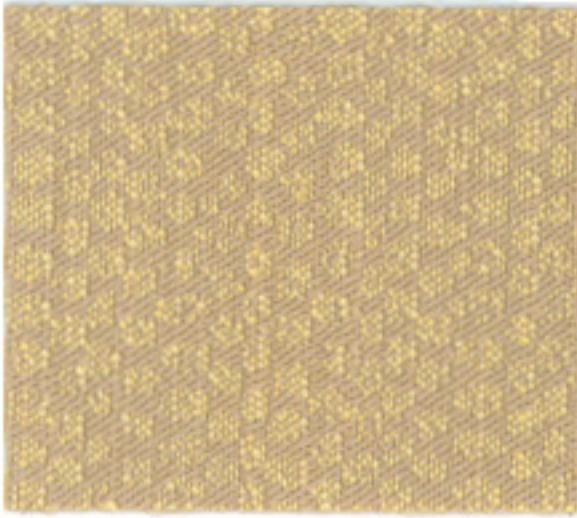
Content: 46% Rayon, 29% Polyester, 25% Cotton

Width: 54"

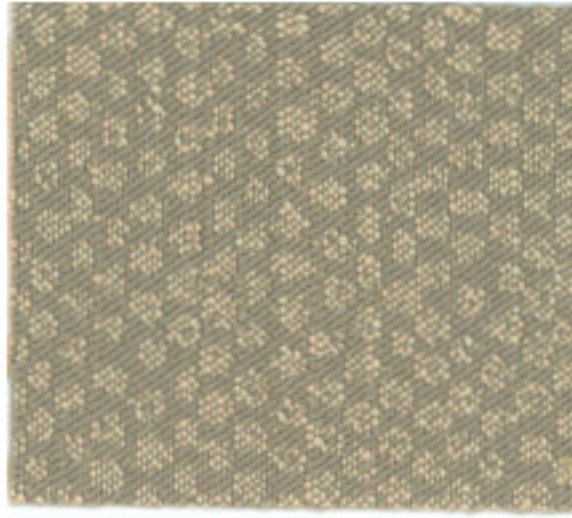
Symbols:

Pallas® Textiles Introduces the Archaeology II Collection

A second upholstery collection by Lori Weitzner that expands upon the original Archaeology collection and theme, Archaeology II was inspired by four of the most intriguing archaeological discoveries of the 19th and 20th centuries—Newgrange, Etruria, Monte Albán, and Malta.



27.093.129 ORE



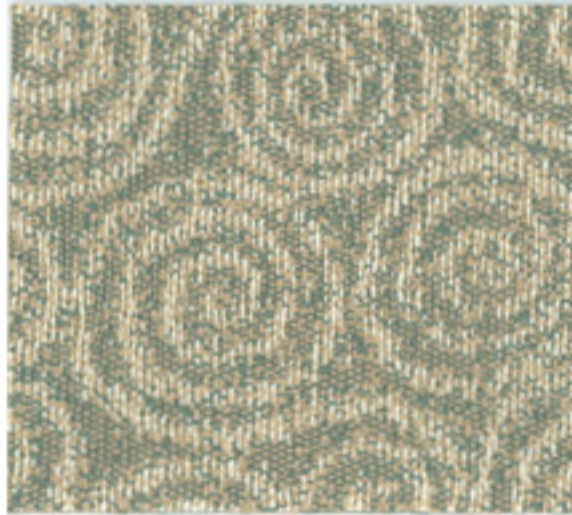
29.093.021 DUSK



29.093.031 TAWNY



27.094.089 WHEATFIELD



27.094.031 NORDIC



27.094.021 HIGHLAND



27.092.091 DUNE



27.092.011 SAND



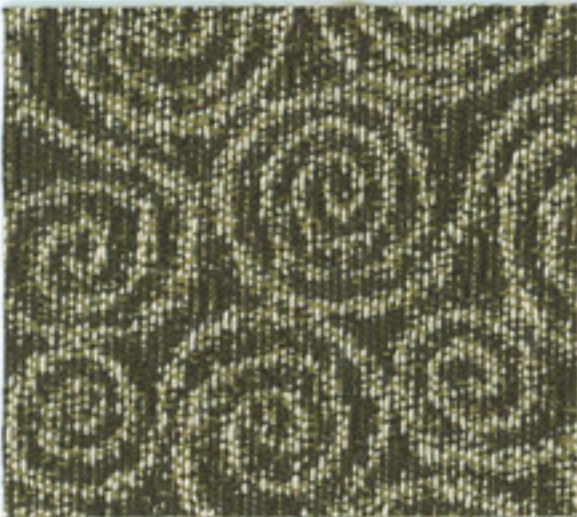
27.093.011 ASH



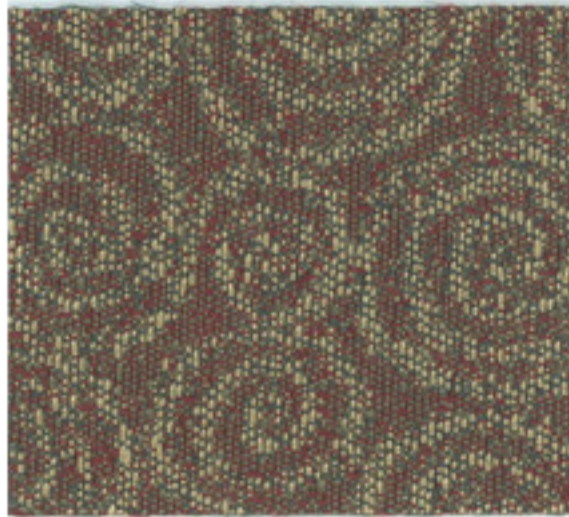
27.093.059 MAHOGANY



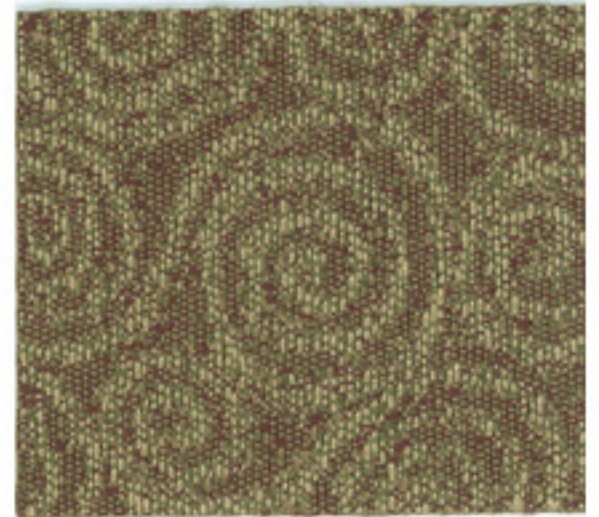
27.093.049 UMBER



27.094.011 STARRY NIGHT



27.094.045 TIMBER



27.094.078 EARTH



27.092.021 EBON



27.092.041 SORREL



27.092.039 CLAY



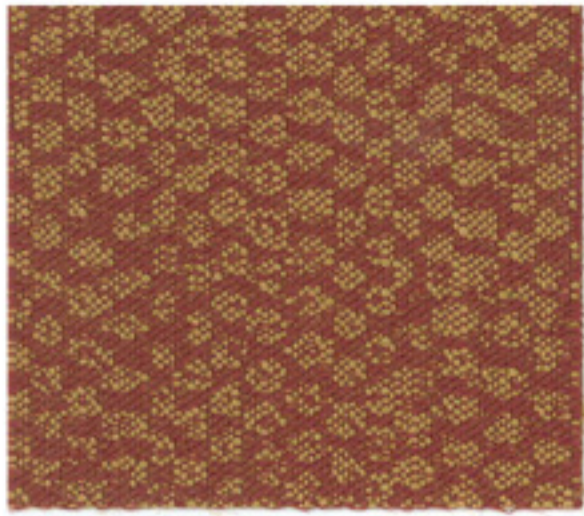
27.095.011 SANDSTONE



27.095.021 DESERT



27.095.039 SADDLE



27.093.118 MOLTEN



27.093.099 MEDITERRANEAN



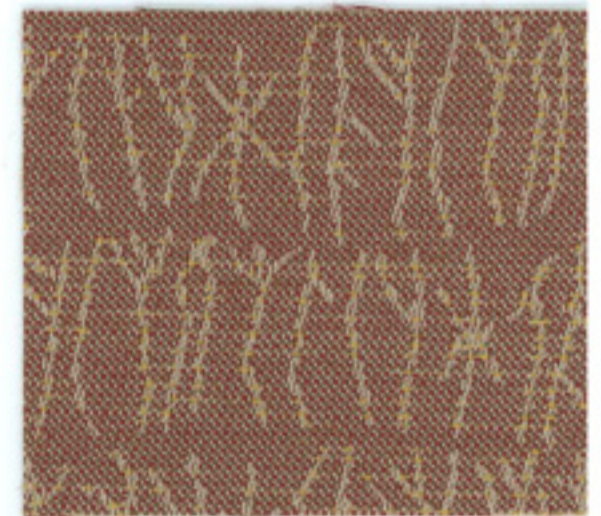
27.093.103 FLAME



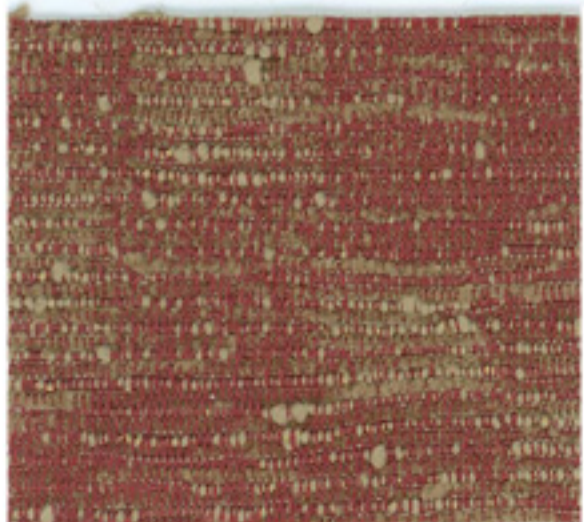
27.094.068 HEATHER



27.092.089 TUSCANY



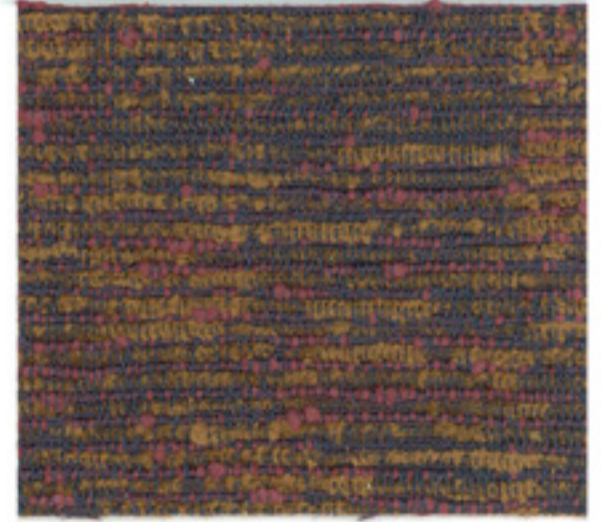
27.092.078 TITIAN



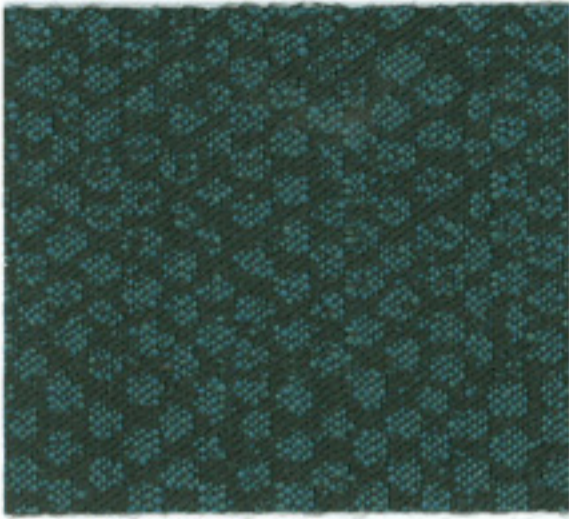
27.095.048 REDROCK



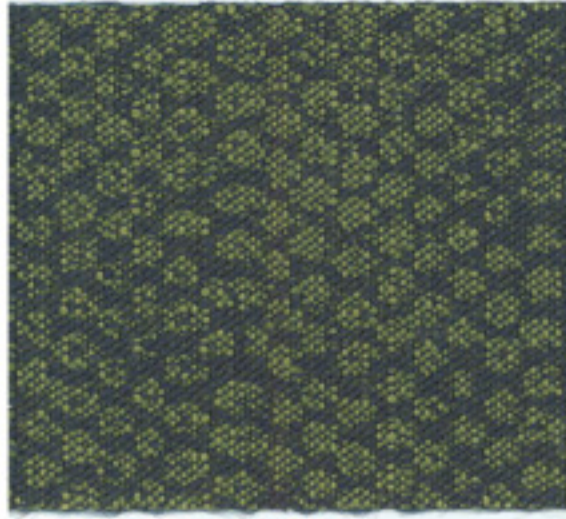
27.095.064 IRON ORE



27.095.053 CRIMSON



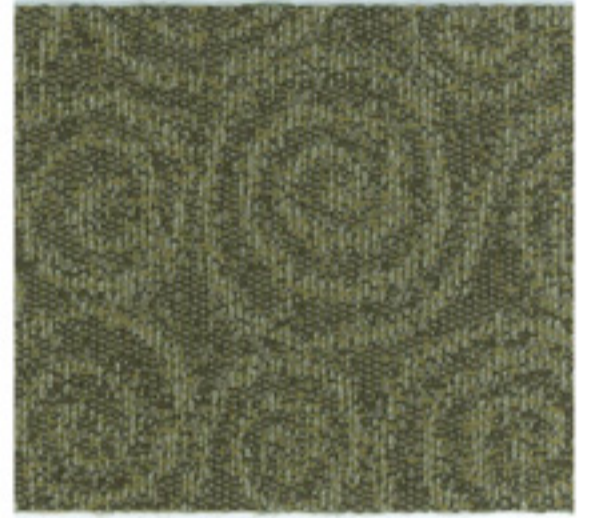
27.093.076 MARINE



27.093.086 SEA PINE



27.093.065 FOREST



27.094.055 PRAIRIE



27.092.056 SKY



27.092.065 JUNIPER



27.095.075 MOSS

Effective September 1, 1999

KI is a registered trademark
of Krueger International, Inc.
Working for You is a trademark
of Krueger International, Inc.

KI-32229/MD/DC/0506

