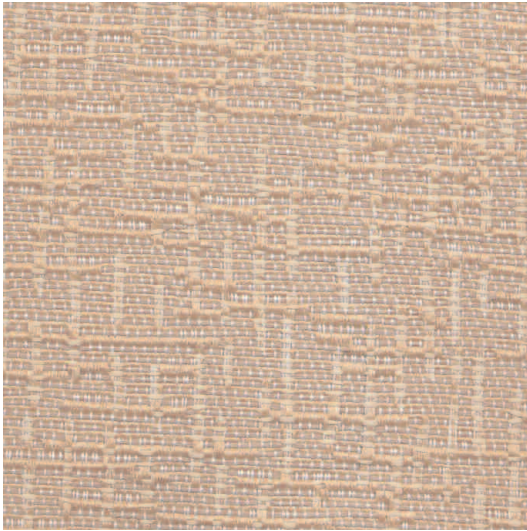
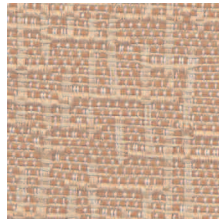


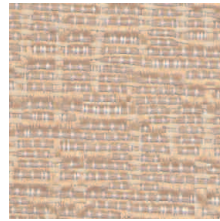
■ **Graph Grade 2**  
Vertical Fabric



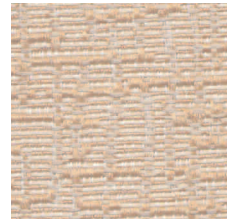
**ASH**  
G2AH



**BUCKEYE**  
G2BE



**ASH**  
G2AH



**SASSAFRAS**  
G2SS



**JUNIPER**  
G2JR



**LYCHEE**  
G2LE



**POPLAR**  
G2PL








**HAWTHORNE**  
G2HE



**SYCAMORE**  
G2SE

## ■ Specification Information

Description	Graph
Grade	2
Content	100% Recycled Polyester
Repeat	10.49" Vertical, 14.46" Horizontal
Width	66"
Weight	11.26 oz. +/- 1 oz./Linear Yard
Fabric Treatment	None
Performance	
 Abrasion	Decorative with full serviceability (#10 Cotton Duck) ASTM D-4157 Mod.: 15,000 Double Rubs. Abrasion resistance is the surface wear of a fabric caused by rubbing and contact with another fabric.
 Physical Properties	Passes Breaking Strength (ASTM D5034): 191 lbs. Warp, 158 lbs. Fill. Breaking strength is the measurement of stress exerted to pull a fabric apart under tension.
 Colorfastness to Wet and Dry Crocking	Passes AATCC 8 Dry Crocking, Class 4. Wet Crocking, Class 4. Crocking is the transfer of dye from the surface of a dyed or printed fabric onto another surface by rubbing.
 Colorfastness to Light	Passes (AATCC 16 – 40 hrs.): L5. Colorfastness to light refers to a material's degree of resistance to the fading effect of light.
 Flame Resistance	Passes ASTM E 84 – Class A or Class I. Flame resistance is the measurement of a fabric's performance when it is exposed to specific sources of ignition.

Colors may vary slightly between dye lots.

KI is a registered trademark of  
Krueger International, Inc.

© 2008 KI Litho in USA KI-32399/HC/EWB/408

