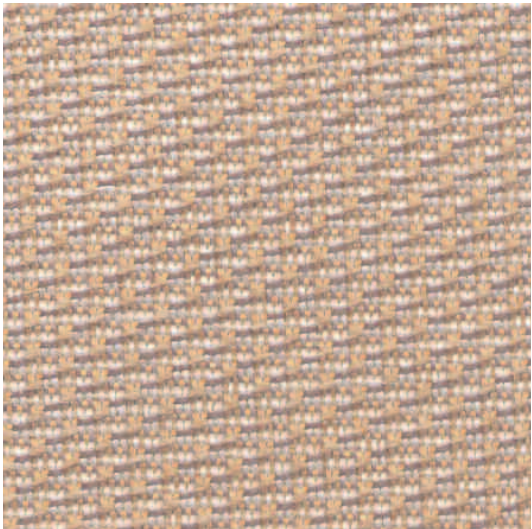


■ Calculation Grade 1

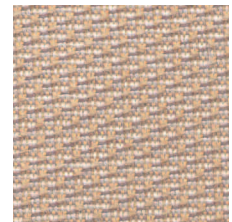
Vertical Fabric



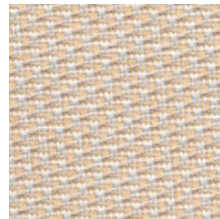
TOBACCO
C1TO



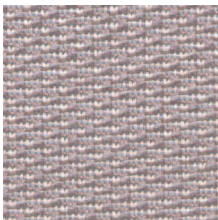
ASH
C1AH



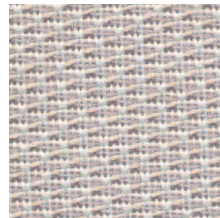
TOBACCO
C1TO



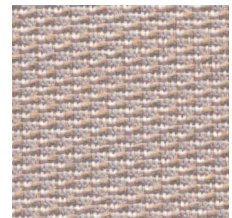
CREAM
C1CM



BOYSENBERRY
C1BY




HEATHER
C1HR



**CHARCOAL
MELANGE**
C1CE

■ Specification Information

Description	Calculation
Grade	1
Content	100% Polyester
Repeat	0.28125" Vertical, 0.1875" Horizontal
Width	66"
Weight	10.2 +/- 1 oz./Linear Yard
Fabric Treatment	None
Performance	
 Abrasion	Decorative with full serviceability (#10 cotton duck) ASTM D-4157 Mod.: 15,000 double rubs. Abrasion resistance is the surface wear of a fabric caused by rubbing and contact with another fabric.
 Physical Properties	Passes Breaking Strength ASTM D-5034: 140 lbs. Warp, 105 lbs. Fill. Breaking strength is the measurement of stress exerted to pull a fabric apart under tension.
 Colorfastness to Wet and Dry Crocking	Passes AATCC 8 Dry Crocking, Class 4. Wet Crocking, Class 4. Crocking is the transfer of dye from the surface of a dyed or printed fabric onto another surface by rubbing.
 Colorfastness to Light	Passes AATCC 16, 40 hrs.: L5. Colorfastness to light refers to a material's degree of resistance to the fading effect of light.
 Flame Resistance	Passes CAL-117 Section E. Passes ASTM E 84 – Class A or Class I. Flame resistance is the measurement of a fabric's performance when it is exposed to specific sources of ignition.

Colors may vary slightly between dye lots.

KI is a registered trademark of
Krueger International, Inc.

© 2007 KI Litho in USA KI-32387/HC/EWB/308

