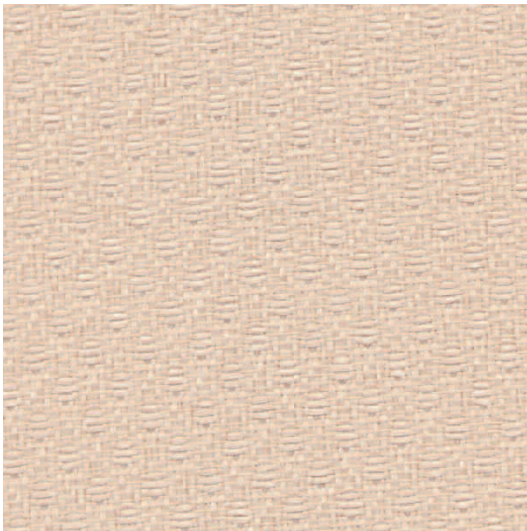
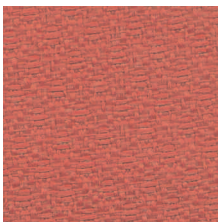


■ **Reciprocal Grade 2**
Vertical Fabric



CREAM SILK
R2CK



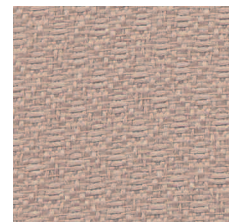
STOP SIGN
R2SN



SQUASH
R2SH



CREAM SILK
R2CK



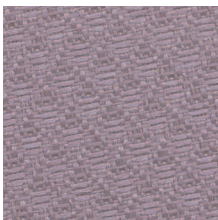
PIGEON
R2PG



HONEY OAT
R2HO



PAVEMENT
R2PV



VIOLET
R2VT



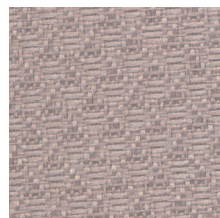
SEASIDE
R2SE



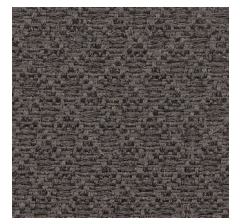
BEAU GREEN
R2BN



CELADON
R2CN







PEWTER
R2PR



ASPHALT
R2AT

■ Specification Information

Description	Reciprocal
Grade	2
Content	100% Recycled Polyester
Repeat	None
Width	66"
Weight	13 oz./Linear Yard +/-1.0
Fabric Treatment	None
Performance	
 Physical Properties	Passes Breaking Strength ASTM D5034: 220 lbs. min. Warp, 180 lbs. min. Fill. Breaking strength is the measurement of stress exerted to pull a fabric apart under tension.
 Colorfastness to Wet and Dry Crocking	Passes AATCC 8 Dry Crocking, Class 4. Wet Crocking, Class 4. Crocking is the transfer of dye from the surface of a dyed or printed fabric onto another surface by rubbing.
 Colorfastness to Light	Passes AATCC-16 Option 3: 40 hrs. Colorfastness to light refers to a material's degree of resistance to the fading effect of light.
 Flame Resistance	Passes ASTM E 84 – Class A or Class I. Flame resistance is the measurement of a fabric's performance when it is exposed to specific sources of ignition.

Colors may vary slightly between dye lots.

KI is a registered trademark of
Krueger International, Inc.

© 2008 KI Litho in USA KI-32397/HC/EWB/408

