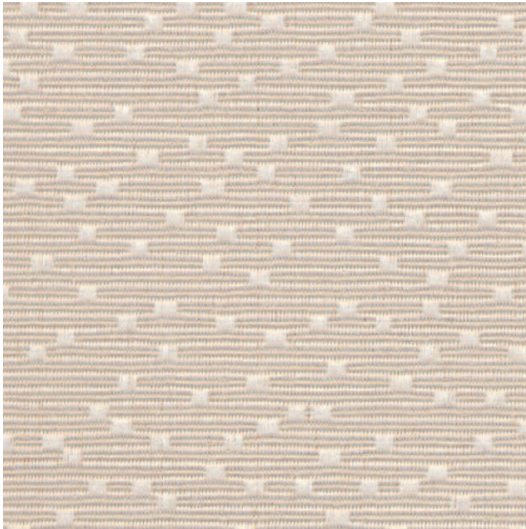


■ Postulate Grade 1

Vertical Fabric



**COOKIE**  
P1CE



**SANDHURST**  
P1ST



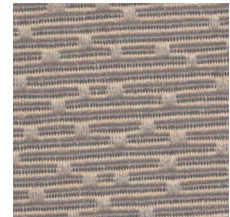
**NEUTRA**  
P1NA



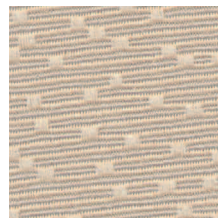
**SIERRA**  
P1SA



**COOKIE**  
P1CE



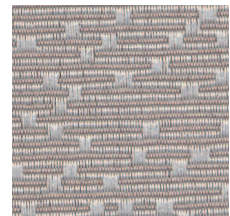
**DUSK**  
P1DK



**THYME**  
P1TE







**SNOWDROP**  
P1SP



**MILKY WAY**  
P1MY

## ■ Specification Information

Description	Postulate
Grade	1
Content	76% Recycled Polyester, 24% Olefin
Repeat	13.5" Vertical, 13.5" Horizontal
Width	66"
Weight	11.5 oz./Linear Yard
Finish/Backing	Acrylic
Performance	
 Physical Propetries	Passes Breaking Strength ASTM D5034: 175.6 lbs. Warp, 141.9 lbs. Fill. Breaking strength is the measurement of stress exerted to pull a fabric apart under tension. Passes Seam Slippage ASTM D3597-D434-75: 81.6 lbs. Warp, 45.1 lbs. Fill. Seam slippage is the movement of yarns in a fabric that occurs when it is pulled apart at a seam.
 Colorfastness to Wet and Dry Crocking	Passes AATCC 8-1981 Dry Crocking, Grade 5. Wet Crocking, Grade 5. Crocking is the transfer of dye from the surface of a dyed or printed fabric onto another surface by rubbing.
 Colorfastness to Light	Passes AATCC-46A-1974 or AATCC 16-E1976: Class 4/40 hrs. min. Colorfastness to light refers to a material's degree of resistance to the fading effect of light.
 Flame Resistance	Passes California Technical Bulletin #117 Section E – Class 1. Flame resistance is the measurement of a fabric's performance when it is exposed to specific sources of ignition.

Colors may vary slightly between dye lots.

KI is a registered trademark of  
Krueger International, Inc.

© 2008 KI Litho in USA KI-32442/HC/EWB/408

