

■ Stonework Grade 3 or G
Upholstery Fabric



LIMESTONE
3WLE



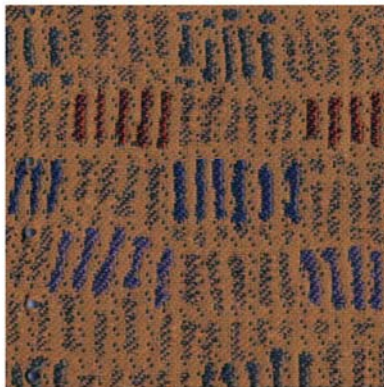
SLATE
3WSE



RIVER ROCK
3WRK



SALTILLO
3WSO



QUARTZITE
3WQE








LIMESTONE
3WLE



BLUESTONE
3WBE

■ Specification Information

Description		Stonework
Grade		3 or G
Content		100% Recycled Polyester
Repeat		12.375" Vertical, 14" Horizontal
Width		54"
Weight		10 +/- 0.5 oz./Linear Yard
Fabric Treatment		None
Performance		
 Abrasion		Passes Abrasion Resistance (ASTM D4157) #10 Cotton Duck abradant 30,000 double rubs no noticeable wear. Abrasion resistance is the surface wear of a fabric caused by rubbing and contact with another fabric.
 Physical Properties		Passes Brush Pill ASTM D3511, Class 4 minimum. Pilling is the formation of fuzzy balls of fiber on the surface of a fabric that remain attached to the fabric. Passes Breaking Strength ASTM D5034: Warp 200 lb. min., Fill 150 lb. min. Breaking strength is the measurement of stress exerted to pull a fabric apart under tension. Passes Seam Slippage ASTM D4034: Warp 70 lbs. min., Fill 70 lbs. min. Seam slippage is the movement of yarns in a fabric that occurs when it is pulled apart at a seam. Passes Tear (ASTM D2261): Warp 15 lbs. min., Fill 15 lbs. min.
 Colorfastness to Wet and Dry Crocking		Passes AATCC 8. Dry Crocking, Class 4 minimum. Wet Crocking, Class 3 minimum. Crocking is the transfer of dye from the surface of a dyed or printed fabric onto another surface by rubbing.
 Colorfastness to Light		Passes AATCC 16 Option 3: Class 4 minimum at 40 hours. Colorfastness to light refers to a material's degree of resistance to the fading effect of light.
 Flame Resistance		Passes California Technical Bulletin #117 Section E – Class 1. Flame resistance is the measurement of a fabric's performance when it is exposed to specific sources of ignition.

Colors may vary slightly between dye lots.

Terratex® is a registered trademark of True Textiles, Inc. and designates fabrics that are made from 100% recycled or compostable material using increasingly sustainable manufacturing practices to produce a high quality product that is recyclable at the end of its useful life. www.terratex.com

Samples shown are only representative of the actual pattern to illustrate all colors within this colorway. Actual to-scale samples available on-line at KI.com/literature or from your KI Sales Representative.

KI and Furnishing Knowledge are trademarks of Krueger International, Inc.

Printed on FSC® certified paper using only vegetable-based inks, including metallics. Please recycle.

© 2011 KI
Litho in USA
Code: KI-32455R1/HC/EWB/811



Photo for overall pattern effect only.
Repeat: 12.375" Vertical, 14" Horizontal