

Regional Materials

LEED NC & CI - Credit 5.1 & 5.2

Green Bay, Wisconsin 54302 facility.

Recycled Content

LEED NC & CI - Credit 4.1 & 4.2

Revised: 1/1/2008

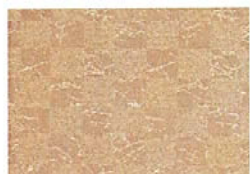
Low Emitting Materials, Systems Furniture & Seating

LEED CI - Credit 4.5

Pallas Textiles and KI standard in-grade fabrics have been Greenguard certified and approved on all KI product offerings.

Rapidly Renewable Materials

LEED NC & CI - Credit 6



Crossword 27.124
100% Recycled Polyester



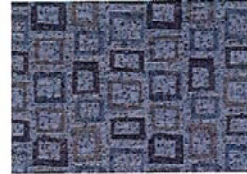
Notations 27.122
100% Recycled Polyester



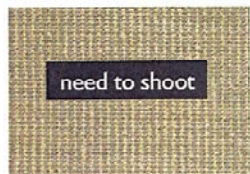
Grafitto 27.125
100% Recycled Polyester



Seeking Truth 27.151
100% Terratec Recycled Polyester



Shorthand 27.123
100% Recycled Polyester



Thunder 27.132
100% Recycled Polyester



Bevel 27.174
91% Post Consumer Recycled Polyester, 9% Polyester



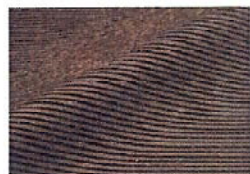
Composition 27.173
45% Rayon, 41% Post Consumer Recycled Polyester, 12% Cotton, 2% Polyester



Inlay 27.175
75% Post Consumer Recycled Polyester, 25% Rayon



Reel To Reel 27.169
100% Repreve® Recycled Polyester



Endurance 27.142
100% Bamboo



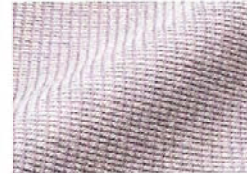
Melody Maker 27.172
86% Post Industrial Recycled Polyester, 14% Bamboo Viscose



Perseverance 27.143
51% Bamboo, 27% Cotton, 22% Acrylic



Substance 27.156
50% Bamboo, 50% Viscose

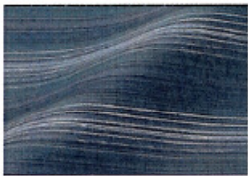


Tempo 27.171
54% Bamboo Viscose, 46% Post Industrial Recycled Polyester



Environmental Data Sheet ■

PALLAS Textiles
Sustainable Fabrics



Amari 29.075
42% Post Consumer Recycled Polyester, 38% Post Industrial Recycled Polyester, 20% Polyester



Asha 29.076
42% Polyester, 39% Post Industrial Recycled Polyester, 19% Post Consumer Recycled Polyester



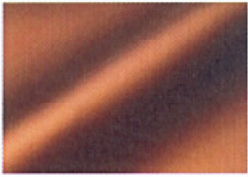
Bela 29.077
49% Polyester, 34% Post Consumer Recycled Polyester, 17% Rayon



Cheeky 27.165
69% Recycled Polyester 31% Nylon



Deeply Rooted 27.148
100% Solution Dyed Nylon



Ground Breaking 27.162
100% Biodegradable Polyurethane



Handwoven 27.176
100% Recyclable Solution Dyed Nylon



Interlace 27.167
100% Recyclable Solution Dyed Nylon



On The Path 27.150
55% Post Industrial Recycled Polyester, 25% Post Consumer Recycled Polyester, 20% Polyester



Perfect Pitch 27.170
44% Antimony Free Post Consumer Recycled Polyester, 31% Post Consumer Recycled Polyester, 25% Post Industrial Recycled Polyester



Sheepish 27.168
100% Wool, MBDC C2C Silver Classification



Solid Footing 27.149
100% Post Industrial Recycled Polyester



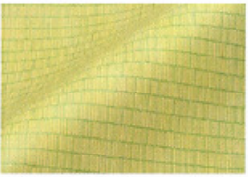
Spun 27.177
78% Solution Dyed Nylon 22% Solution Dyed Polyester



Trevi 27.154
55% Post Consumer Recycled Polyester, 45% Polyester



Turtle Neck 27.146
100% Recyclable Solution Dyed Nylon



Unraveled 27.168
100% Biodegradable Polyurethane



Unspun 29.071
51% Post Industrial Recycled Polyester, 36% Polyester, 13% Post Consumer Recycled Polyester



Work Horse 27.147
100% Recyclable Solution Dyed Nylon