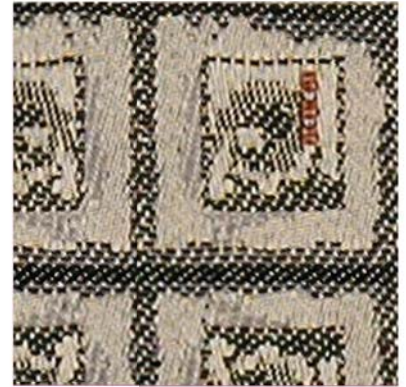


■ Glass Block Grade 3 or G
Upholstery Fabric



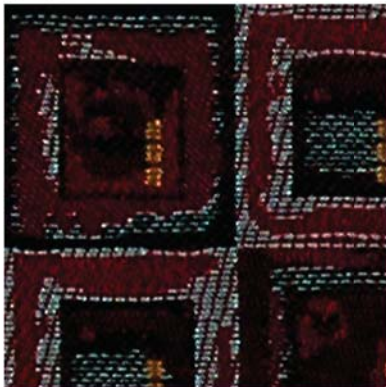
BUTTERSCOTCH
3ABH



ZEBRA
3AZA



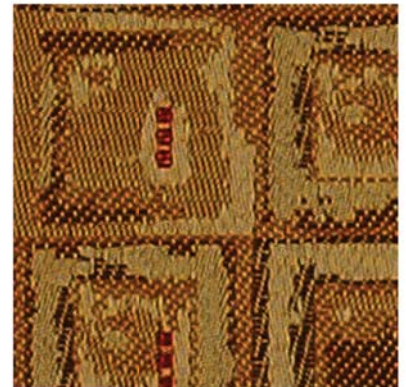
CARAMEL
3ACL



CHIANTI
3ACI



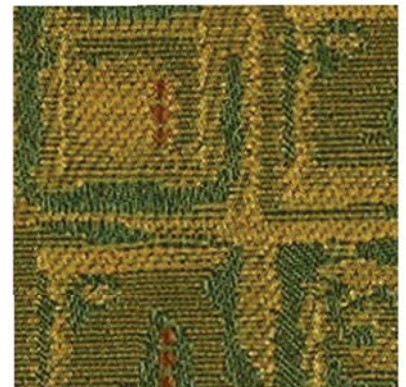
PERSIMMON
3APN



BUTTERSCOTCH
3ABH








MIDNIGHT
3AMT



AVOCADO
3AAO

■ Specification Information

Description	Glass Block
Grade	3 or G
Content	100% Recycled Polyester
Repeat	7.0625" Vertical, 7.0625" Horizontal
Width	54"
Weight	11.2 +/- 0.5 oz./Linear Yard
Fabric Treatment	None
Performance	
 Abrasion	30,000 Double Rubs. Abrasion resistance is the surface wear of a fabric caused by rubbing and contact with another fabric.
 Physical Properties	Passes Brush Pill ASTM D3511, Class 4 minimum. Pilling is the formation of fuzzy balls of fiber on the surface of a fabric that remain attached to the fabric. Passes Breaking Strength ASTM D5034: Warp 225 lb. min., Fill 225 lb. min. Breaking strength is the measurement of stress exerted to pull a fabric apart under tension. Passes Seam Slippage (ASTM D4034): Warp 25 lbs. min., Fill 25 lbs. min. Seam slippage is the movement of yarns in a fabric that occurs when it is pulled apart at a seam. Passes Tear (ASTM D2261): Warp 40 lbs. min., Fill 40 lbs. min.
 Colorfastness to Wet and Dry Crocking	Passes AATCC 8. Dry Crocking, Class 4 minimum. Wet Crocking, Class 3 minimum. Crocking is the transfer of dye from the surface of a dyed or printed fabric onto another surface by rubbing.
 Colorfastness to Light	Passes (AATCC 16 Option 3): Class 4 minimum at 40 hours. Colorfastness to light refers to a material's degree of resistance to the fading effect of light.
 Flame Resistance	Passes California Technical Bulletin #117 Section E – Class 1. Flame resistance is the measurement of a fabric's performance when it is exposed to specific sources of ignition.

Colors may vary slightly between dye lots.

Terratex® is a registered trademark of True Textiles, Inc. and designates fabrics that are made from 100% recycled or compostable material using increasingly sustainable manufacturing practices to produce a high quality product that is recyclable at the end of its useful life. www.terratex.com

KI and Furnishing Knowledge are trademarks of Krueger International, Inc.

© 2011 KI
Litho in USA
Code: KI-32451R1/HC/EWB/811

Printed on FSC® certified paper using only vegetable-based inks, including metallics. Please recycle.

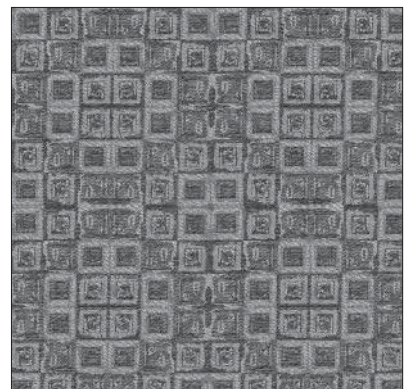


Photo for overall pattern effect only.

Repeat: 7.0625" Vertical, 7.0625" Horizontal