



Pallas®

Interlace

from the Entwined Collection



Pallas® Textiles Introduces Interlace from the Entwined Collection

Varied line weights intertwine in a lacy, formal pattern on Interlace. The semi-sheen background is overlaid with delicate matte lines and raised embroidered stitches. The tonal shades in the background offer a contrasting pop of color.

This pattern is constructed of 100% recyclable solution-dyed nylon and is treated with Nano-Tex® – an enhancement process that resists spills. It is also bleach cleanable (CDC-approved 10:1 water/bleach mix). Rinse the surface with clear water after cleaning.



A portion of the proceeds from the Entwined collection will benefit breast cancer research.



Flame Resistance

Passes California Bulletin 117 Section E. Flame resistance refers to a fabric's ability to resist burning.



Colorfastness to Wet & Dry Crocking

Passes AATCC 8 Dry Crocking, Class 4 minimum. Wet Crocking, Class 3 minimum. Colorfastness is a fabric's ability to retain color in various conditions. Crocking refers to the rubbing off of color from a fabric when subjected to abrasion.



Colorfastness to Light

Passes AATCC 16A or AATCC 16E Class 4 minimum at 40 hours. Colorfastness to light refers to a fabric's ability to resist fading when exposed to light.



Physical Properties

Passes Brush Pile ASTM D3511, 3 minimum. Pilling is the formation of fuzzy balls on the surface of the fabric. Pilling occurs when loose fibers in the fabric are worked to the surface after the fabric is subjected to abrasion. Passes breaking strength ASTM D3597-D1682-64. 50 lbs. minimum in warp & weft. Breaking strength measures a fabric's ability to resist tearing or breaking when subjected to tension. Passes seam slippage ASTM D3597-D434 25 lbs. minimum in warp & weft. Seam slippage refers to the conditions when fabrics pull apart at a sewn seam.



Abrasion

Passes ASTM 3597 modified (10# cotton duck) 30,000 double rubs Wyzenbeek method. Passes ASTM D4966 (21 oz. weight) 40,000 rubs Martindale method. Abrasion resistance is the ability of a fabric to withstand surface wear from rubbing.

Interlace 27.167

Grade: P2

Content: 100% Recycled Solution-dyed Nylon Treated with Nano-Tex®

Repeat: V – 1-7/16", H – 5-1/4"

Width: 54"

Abrasion: 100,000 Double Rubs

Symbols:     



27.167.019 BUTTER



27.167.021 ECRU



27.167.049 MANGO



27.167.058 BRICK



27.167.085 CITRINE



27.167.077 BERRY



27.167.094 AQUA



27.167.111 ESPRESSO



27.167.068 VIOLET



27.167.104 MIDNIGHT



27.167.031 PUMICE



27.167.122 CARBON

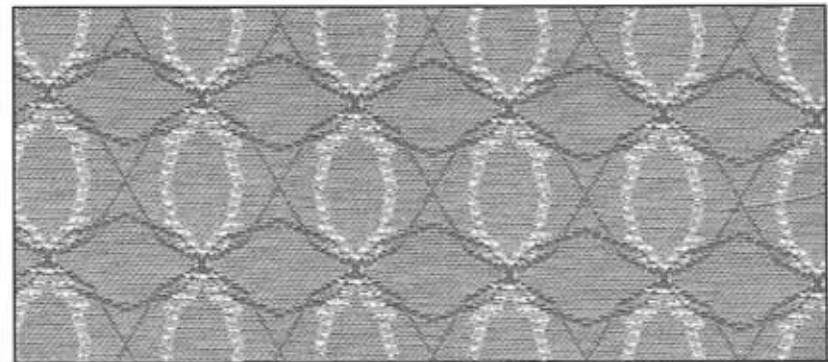


Photo for overall pattern effect only; Repeat: 1-7/16" Vertical, 5-1/4" Horizontal

Effective March 1, 2010

KI, Furnishing Knowledge and Pallas
are registered trademarks
of Krueger International, Inc.

© 2010 KI
All Rights Reserved.
Litho in USA.
P-2009-31/HC/EWB/0310

Printed on paper using only vegetable-based
inks, including metallics. Please recycle.

