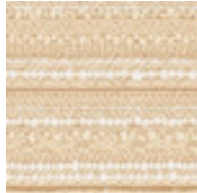


**Amari**  
29.075



Frost



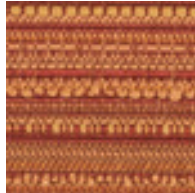
Angora



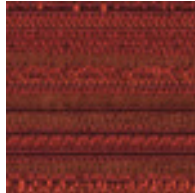
Caramel



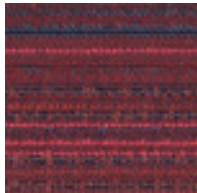
Dahila



Clay



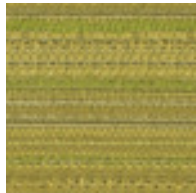
Geranium



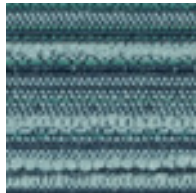
Twilight



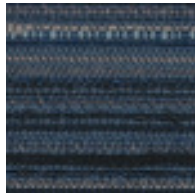
Spruce



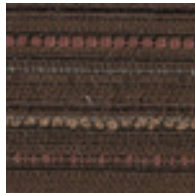
Aloe



Marine



Silhouette



Clove

**Regional Materials**

LEED NC & CI - Credit 5.1 & 5.2  
*Green Bay, Wisconsin 54302 facility.*

**Recycled Content**

LEED NC & CI - Credit 4.1 & 4.2

| Application        | Recycled Content % | % Post Consumer | % Pre Consumer | Can be recycled? Y or N |
|--------------------|--------------------|-----------------|----------------|-------------------------|
| Upholstery         |                    |                 |                |                         |
| Recycled Polyester | 80%                | 42%             | 38%            | Yes                     |
| Polyester          | 20%                | -               | -              | Yes                     |

**Low Emitting Materials, Systems Furniture & Seating**

LEED CI - Credit 4.5  
Pallas Textiles and KI standard in-grade fabrics have been Greenguard certified and approved on all KI product offerings.