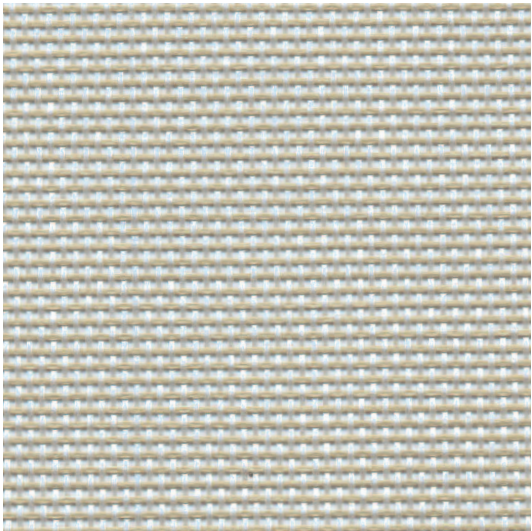
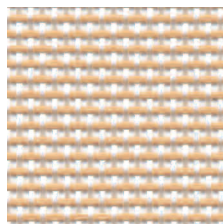


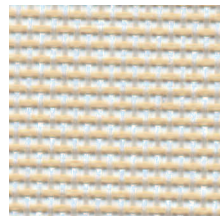
■ Mesh



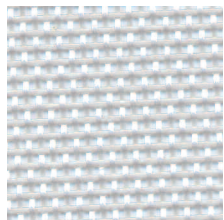
ALOE  
HMAL



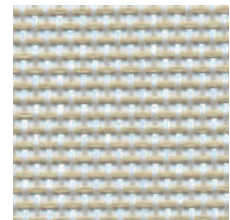
CAMELBACK  
HMCA



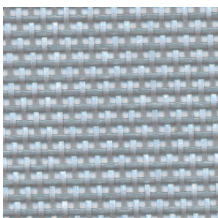
SILVER SAGE  
HMSS



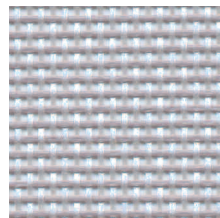
GLASSBLOCK  
HMGL



ALOE  
HMAL



BLUE VARNISH  
HMBV



MYTH  
HMMY

## ■ Specification Information

Description	Mesh
Content	Polyester Mesh
Width	54"
Mesh Treatment	Specially Compounded Stain-resistant Vinyl Coating
Performance	
Tensile Strength	Dense weave specially woven for minimum 200 lb./lin. inch tensile strength and no sag.

Colors may vary slightly between dye lots.

KI is a registered trademark of  
Krueger International, Inc.

© 2008 KI Litho in USA KI-32324R1/HC/EWB/108

