



Pallas®

Running Stitch
from the Entwined Collection








Pallas® Textiles Introduces Running Stitch from the Entwined Collection

The raw look of raised stitch and three-dimensional soft boucle give Running Stitch a sense of dimension. The sophisticated four-color combinations imitate the plaid pattern found when viewing the delicate lines of leaves crawling up a trellis.

This pattern offers Crypton®, a specially engineered fabric system with an integrated moisture barrier that is stain-, moisture-, mildew-, bacteria- and odor-resistant. It is also bleach cleanable (CDC-approved 10:1 water/bleach mix). Rinse the surface with clear water after cleaning.

Running Stitch 29.070

Grade: P2
Content: 100% Polyester, Crypton®
Repeat: V – 14-5/8", H – 4-7/8"
Width: 54"
Abrasion: 80,000 Double Rubs
Symbols:     



A portion of the proceeds from the Entwined collection will benefit breast cancer research.



Flame Resistance

Passes California Bulletin 117 Section E. Flame resistance refers to a fabric's ability to resist burning.



Colorfastness to Wet & Dry Crocking

Passes AATCC 8 Dry Crocking, Class 4 minimum. Wet Crocking, Class 3 minimum. Colorfastness is a fabric's ability to retain color in various conditions. Crocking refers to the rubbing off of color from a fabric when subjected to abrasion.



Colorfastness to Light

Passes AATCC 16A or AATCC 16E Class 4 minimum at 40 hours. Colorfastness to light refers to a fabric's ability to resist fading when exposed to light.



Physical Properties

Passes Brush Pile ASTM D3511, 3 minimum. Pilling is the formation of fuzzy balls on the surface of the fabric. Pilling occurs when loose fibers in the fabric are worked to the surface after the fabric is subjected to abrasion. Passes breaking strength ASTM D3597-D1682-64, 50 lbs. minimum in warp & weft. Breaking strength measures a fabric's ability to resist tearing or breaking when subjected to tension. Passes seam slippage ASTM D3597-D434 25 lbs. minimum in warp & weft. Seam slippage refers to the conditions when fabrics pull apart at a sewn seam.



Abrasion

Passes ASTM 3597 modified (10# cotton duck) 30,000 double rubs Wyzenbeek method. Passes ASTM D4966 (21 oz. weight) 40,000 rubs Martindale method. Abrasion resistance is the ability of a fabric to withstand surface wear from rubbing.



29.070.021 WHEAT



29.070.011 ECRU



29.070.039 PAPAYA



29.070.048 BRICK



29.070.075 CITRINE



29.070.094 MIDNIGHT



29.070.058 VIOLET



29.070.085 PINE



29.070.067 BERRY



29.070.112 CARBON



29.070.101 ESPRESSO

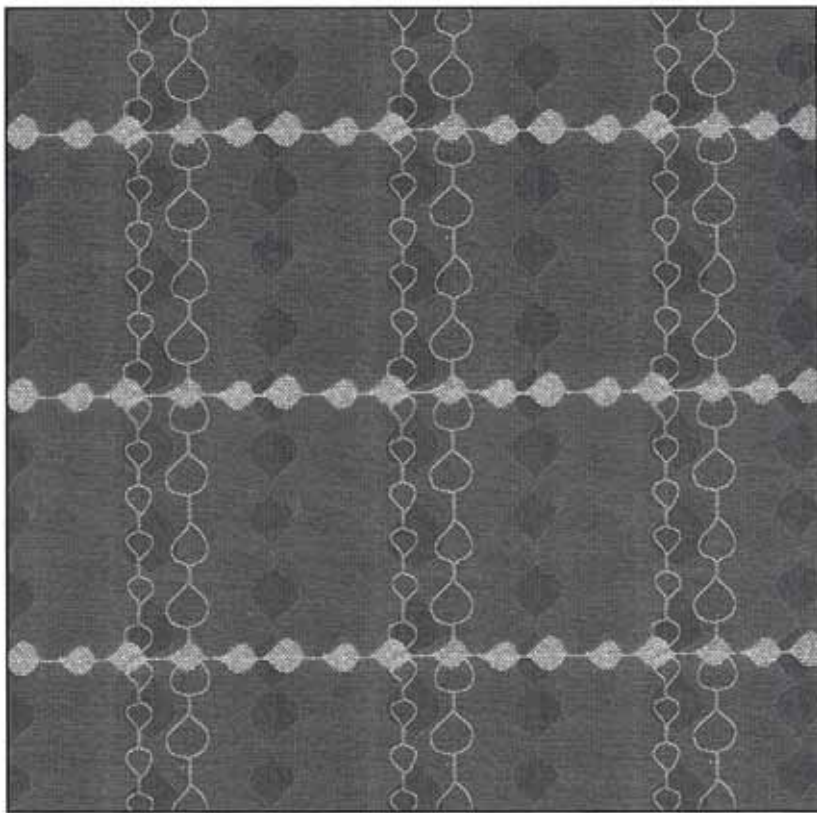


Photo for overall pattern effect only; Repeat: 14-5/8" Vertical, 4-7/8" Horizontal

Effective March 1, 2010

KI, Furnishing Knowledge and Pallas
are registered trademarks
of Krueger International, Inc.

© 2010 KI
All Rights Reserved.
Litho in USA.
P-2009-30/HC/EWB/0310

Printed on paper using only vegetable-based
inks, including metallics. Please recycle.

