



Pallas®

On The Fringe

from the Entwined Collection








Pallas® Textiles Introduces On The Fringe from the Entwined Collection

On the Fringe shows random overlapping circles floating in a simple twill background. Its abstract organic shapes are both delicate and dense. The multi-colored combinations range in depth and transparency, creating a layered look.

This pattern offers Crypton®, a specially engineered fabric system with an integrated moisture barrier that is stain-, moisture-, mildew-, bacteria- and odor-resistant.

On the Fringe 29.069

**Grade:** P2  
**Content:** 64% Rayon, 36% Polyester  
**Repeat:** V – 13-7/8", H – 14-1/2"  
**Width:** 54"  
**Abrasion:** 100,000 Double Rubs  
**Symbols:**     



A portion of the proceeds from the Entwined collection will benefit breast cancer research.



**Flame Resistance**

Passes California Bulletin 117 Section E. Flame resistance refers to a fabric's ability to resist burning.



**Colorfastness to Wet & Dry Crocking**

Passes AATCC 8 Dry Crocking, Class 4 minimum. Wet Crocking, Class 3 minimum. Colorfastness is a fabric's ability to retain color in various conditions. Crocking refers to the rubbing off of color from a fabric when subjected to abrasion.



**Colorfastness to Light**

Passes AATCC 16A or AATCC 16E Class 4 minimum at 40 hours. Colorfastness to light refers to a fabric's ability to resist fading when exposed to light.



**Physical Properties**

Passes Brush Pile ASTM D3511, 3 minimum. Pilling is the formation of fuzzy balls on the surface of the fabric. Pilling occurs when loose fibers in the fabric are worked to the surface after the fabric is subjected to abrasion. Passes breaking strength ASTM D3597-D1682-64, 50 lbs. minimum in warp & weft. Breaking strength measures a fabric's ability to resist tearing or breaking when subjected to tension. Passes seam slippage ASTM D3597-D434 25 lbs. minimum in warp & weft. Seam slippage refers to the conditions when fabrics pull apart at a sewn seam.



**Abrasion**

Passes ASTM 3597 modified (10# cotton duck) 30,000 double rubs Wyzenbeek method. Passes ASTM D4966 (21 oz. weight) 40,000 rubs Martindale method. Abrasion resistance is the ability of a fabric to withstand surface wear from rubbing.



29.069.011 ECRU



29.069.021 WHEAT



29.069.039 BUTTER



29.069.049 MANGO



29.069.068 VIOLET



29.069.058 POPPY



29.069.085 CITRINE



29.069.104 AQUA



29.069.077 BERRY



29.069.095 PINE



29.069.114 MIDNIGHT



29.069.132 CARBON



29.069.121 ESPRESSO

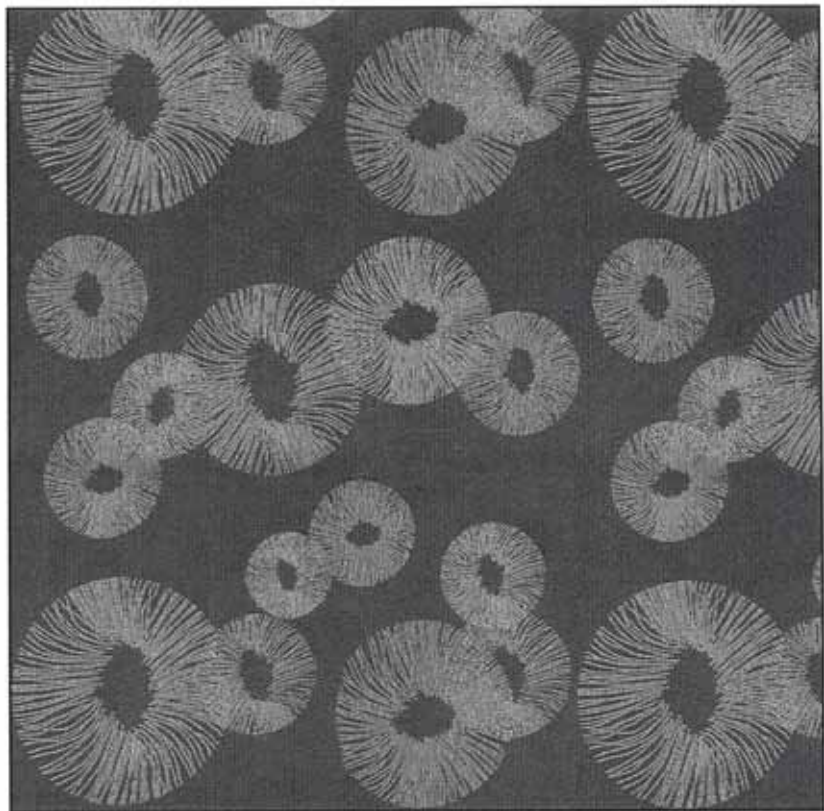


Photo for overall pattern effect only; Repeat: 13-7/8" Vertical, 14-1/2" Horizontal  
To view all colors within a colorway, order a to-scale sample available on-line at [K1.com/literature](http://K1.com/literature) or contact your K1 Sales Representative.

**Effective March 1, 2010**

KI, Furnishing Knowledge and Pallas  
are registered trademarks  
of Krueger International, Inc.

© 2010 KI  
All Rights Reserved.  
Litho in USA.  
P-2009-26/HC/EWB/0310

Printed on paper using only vegetable-based  
inks, including metallics. Please recycle.

