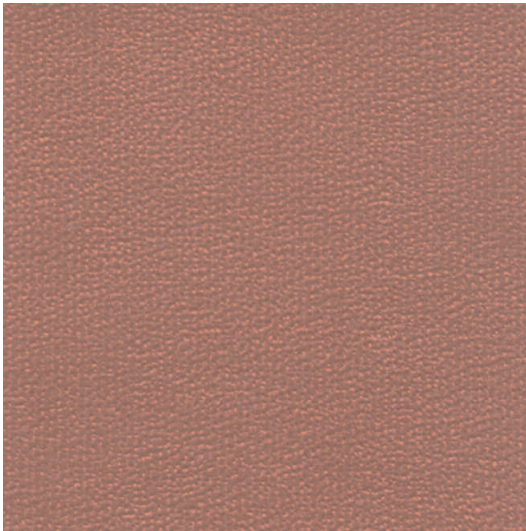


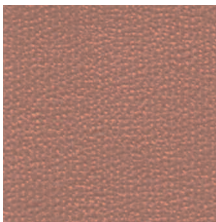
■ **Stratosphere** Grade 2V or E
Vinyl



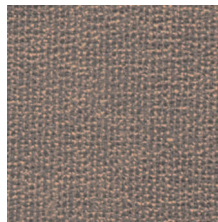
**WORKING
FOR
YOU**



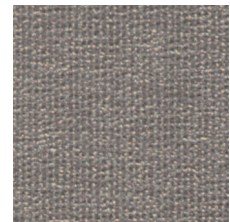
POPPY
VSPY



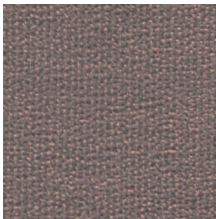
POPPY
VSPY



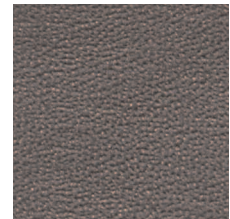
COPPER
2VCP



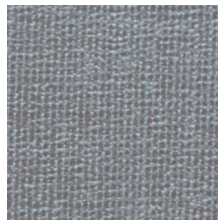
TAUPE
2VTA



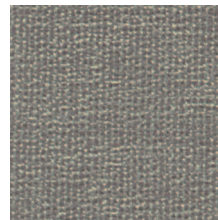
BORDEAUX
VSBX



ESPRESSO
2VEO



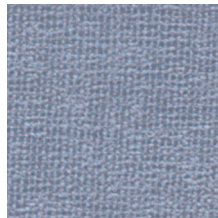
BLUE ICE
2VBI



GRASS
VSGS



MOSS
2VMZ



MYSTIC BLUE
VSME

■ Specification Information

Description	Stratosphere
Grade	2V or E
Content	Soft Hi-Loft2™ Backing
Width	54"
Weight	27 oz.
Finishes & Treatments	Environmentally Friendly Waterbase Topcoat Mildew Resistant UV Stabilized Pigments Antimicrobial/Antibacterial
Performance	
 Abrasion	100,000 Cycles (Wyzenbeek) CFFA-1 (Federal Standard 191A – Method 5304). Abrasion resistance is the surface wear of a fabric caused by rubbing and contact with another fabric.
 Flame Resistance	Passes California Technical Bulletin #117 Section E – Class I. Flame resistance is the measurement of a fabric's performance when it is exposed to specific sources of ignition.

Colors may vary slightly between dye lots.

KI and Working For You
are registered trademarks of
Krueger International, Inc.

© 2007 KI Litho in USA KI-32428/HC/EWB/1207

