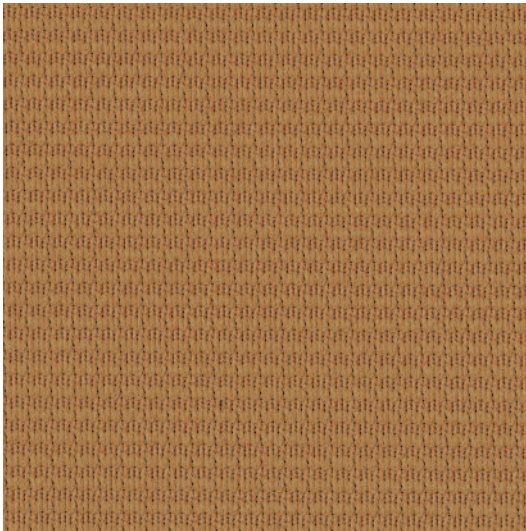
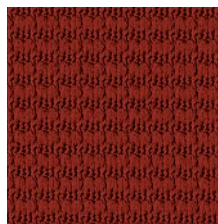


■ Altus Grade A1  
Upholstery Fabric



MUSTARD SEED  
A1MS



RUSSET  
A1RS



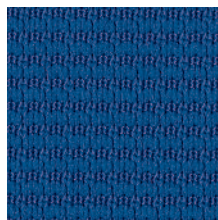
MERLOT  
A1ML



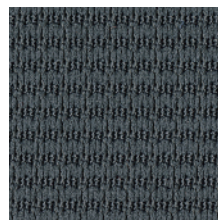
MUSTARD SEED  
A1MS



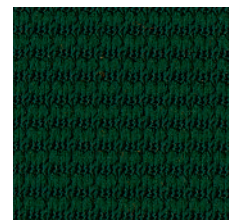
BLUE LAGOON  
A1BL



PERIWINKLE  
A1PW



GUNMETAL  
A1GM



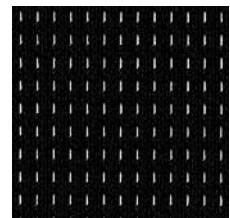
FOREST  
A1FR



MIDNIGHT  
A1MN








ALTUS BLACK  
LEATHER



ALTUS MESH

## ■ Specification Information

Description	Altus
Grade	A1
Content	Fabric – 100% Polyester Mesh – 100% Polyester Leather – 100% Genuine Leather
Repeat	None
Width	Fabric and Leather – 54" Mesh – 18"
Weight	Fabric and Mesh – 14.8+/- 1.0 oz./Linear Yard
Fabric Treatment	None
Performance	
 Abrasion	100,000 double rubs. Abrasion resistance is the surface wear of a fabric caused by rubbing and contact with another fabric
 Physical Properties	Passes Brush Pill ASTM D3511. Class 3 minimum. Pilling is the formation of fuzzy balls of fiber on the surface of a fabric that remain attached to the fabric. Passes Breaking Strength ASTM D5034. 50 lb. min. in warp and weft. Breaking strength is the measurement of stress exerted to pull a fabric apart under tension.
 Colorfastness to Wet and Dry Crocking	Passes AATCC 8. Dry Crocking, Class 4 minimum. Wet Crocking Class 3 minimum. Crocking is the transfer of dye from the surface of a dyed or printed fabric onto another surface by rubbing.
 Colorfastness to Light	Passes AATCC 16 Option 1 or 3: Class 4 minimum at 40 hours. Colorfastness to light refers to a material's degree of resistance to the fading effect of light.
 Flame Resistance	Passes California Technical Bulletin #117 Section E – Class 1. Flame resistance is the measurement of a fabric's performance when it is exposed to specific sources of ignition.

Colors may vary slightly between dye lots.

KI and Furnishing Knowledge are registered trademarks of Krueger International, Inc.

Printed on FSC certified paper using only vegetable-based inks, including metallics. Please recycle.

© 2009 KI Litho in USA KI-32489/HC/IP/1009

